



# CNTHA

Canadian Naval Technical History Association



# CANDIB

**Canadian Defence Industrial Base Project**

15 April 2004



# Outline

- Aim of briefing
- Mission Statement
- Structure of the Study
- Participants
- Methodologies
- Progress to Date
- Design Houses
- Ship Class Framework
- Next Steps
- Contributions Sought
- Discussion





# Aim of Briefing



- An introduction to the CANDIB project
- Seeking participation and support





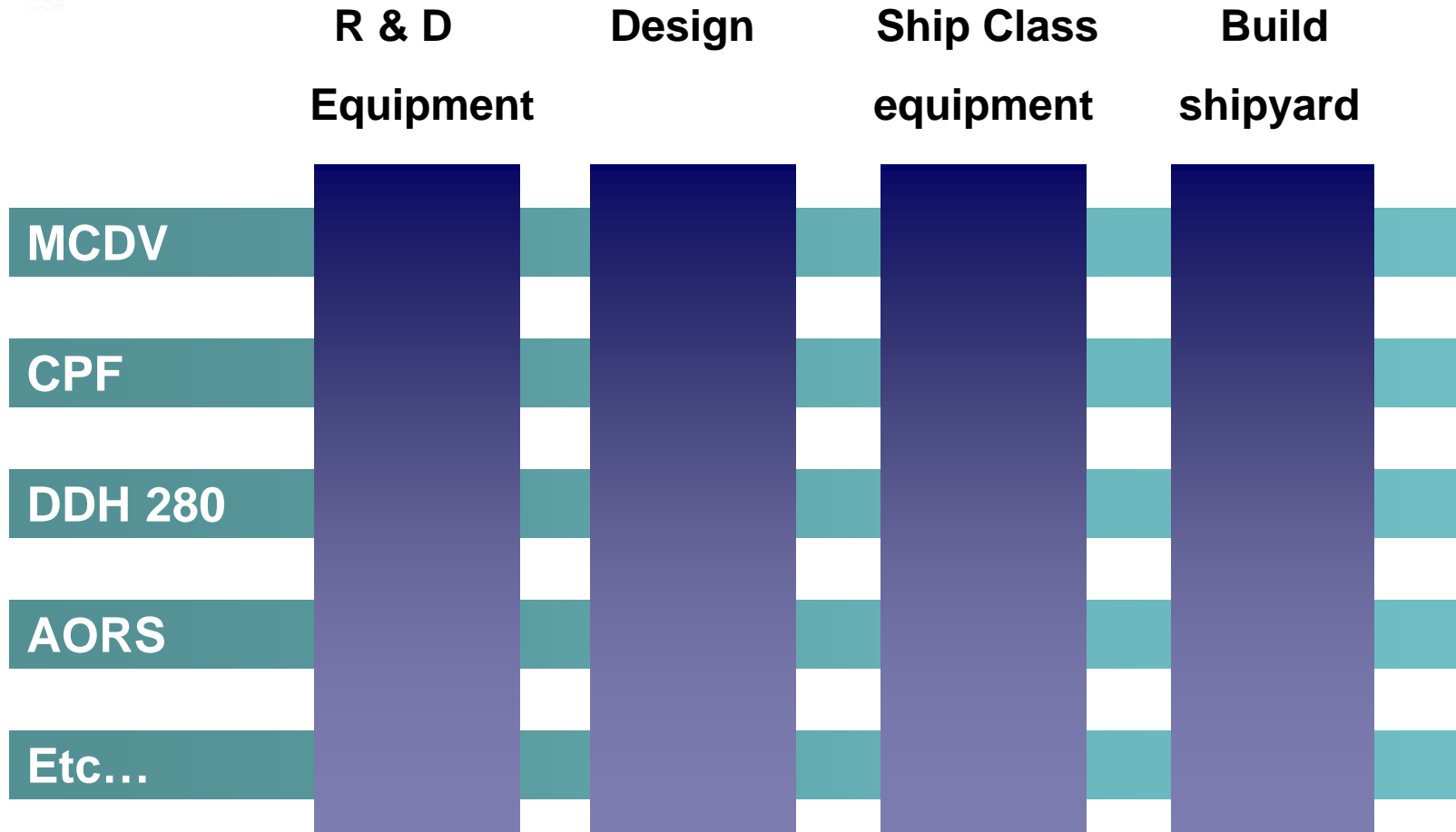
# CANDIB: Mission Statement



To document the development of the Canadian industrial base as it evolved in support of warship construction and naval equipment programs between 1930 and 2000, and the affects these programs had on that industrial base.



# Structure





# Participants



- Project Leader – Tony Thatcher
- R&D – Pat Barnhouse
- Design – Jim Williams
- Build – Doug Hearnshaw
- Ship Classes & Equipment – Colin Brown
  - MCDV – Tony Thatcher
  - CPF – Peter MacMillan
  - DDH 280 – Gord Smith
  - AOR – Don Jones
- Refits – Don Wilson
- Communications – Don Cruickshank
- Website – Don Wilson



# Methodologies



- Literature research (CNTHA, Books, Periodicals, Technical papers, web sites, etc.)
- Personal Recollections – solicit written submissions
- Recorded Interviews
- Periodic Meetings – report progress,
- Data Storage – established formats, referencing schemes
- Communications
  - CNTHA News
  - Web site: [www.donwilson.ca/cntha/CNTHA.html](http://www.donwilson.ca/cntha/CNTHA.html)



## Progress to Date

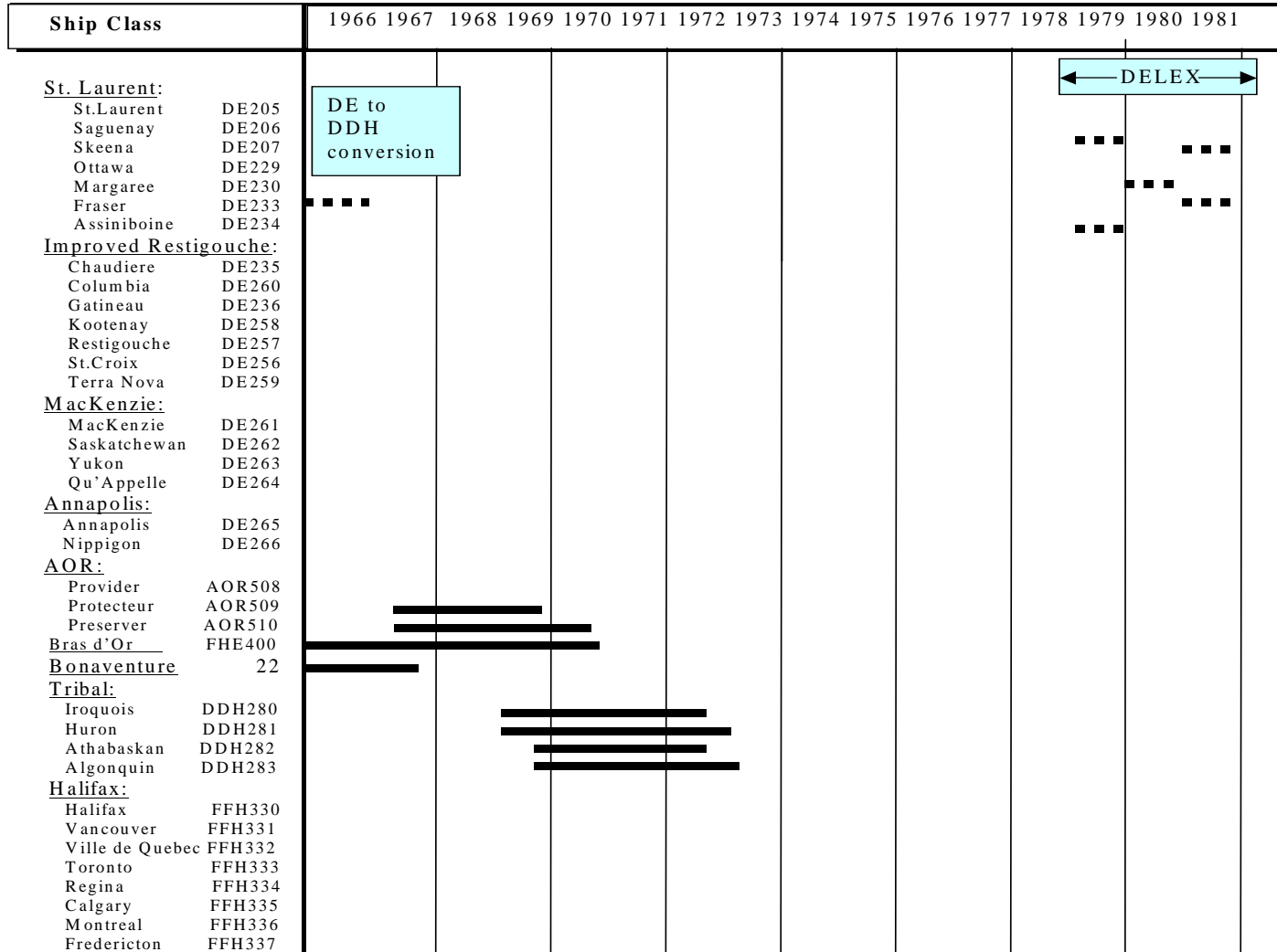


- Established framework for gathering data: R&D, Design, Build and Ship Classes
- Developed methodologies
- Identified and Contacted a number of potential sources
- Recruited a number of volunteers
- The Design segment has progressed quite well





# Ship Classes vs Time



DE to DDH conversion

← DELEX →



# Designers & Builders

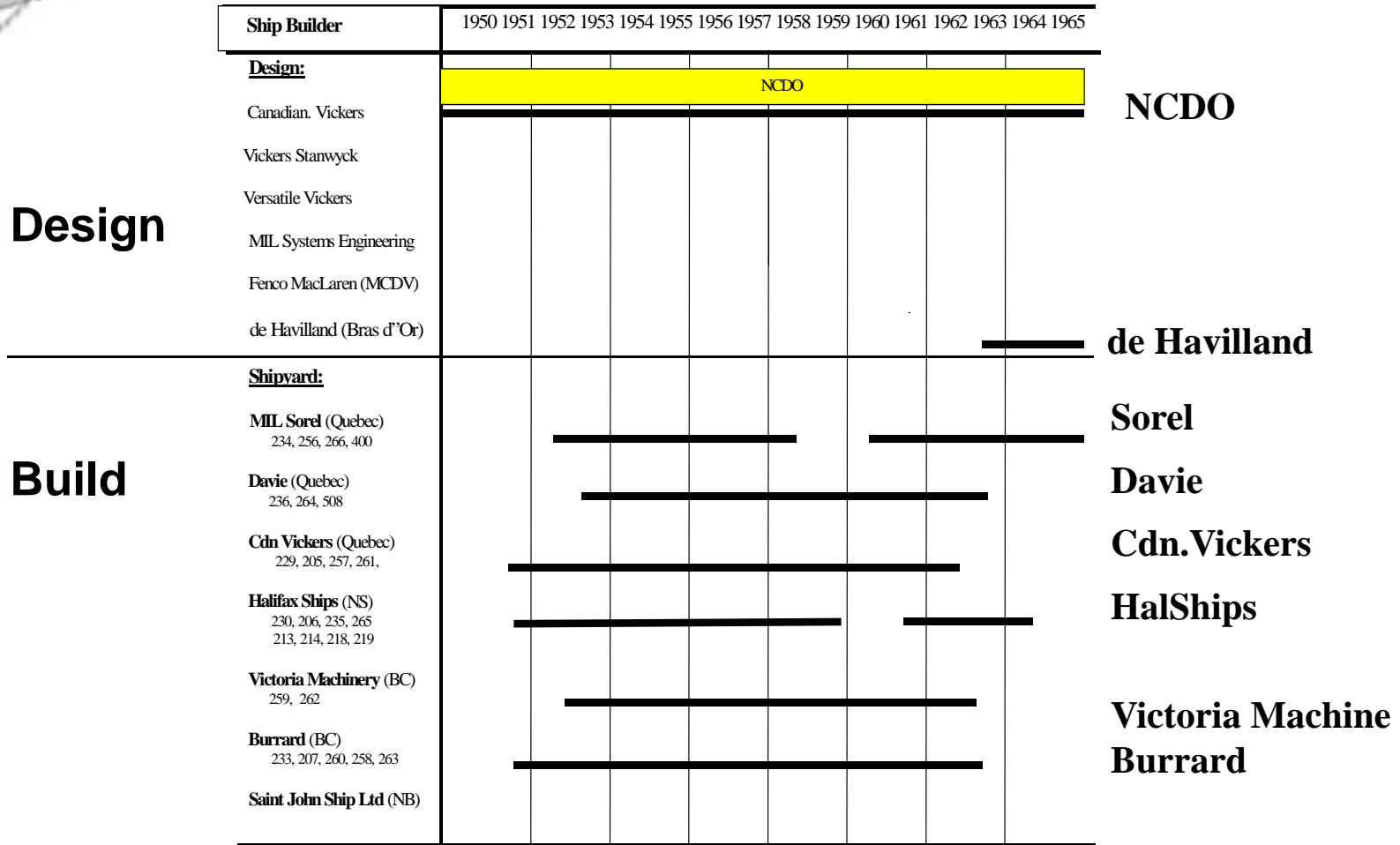


Chart  
2 of 5



# Design Houses



1930 - 1949    6 Ship Classes    (no evidence found)

1949 - 2002    16 Ship Classes    (evidence found)

**\* 7 companies identified, providing**

**\* Initial Design**

**\* Mid-life Updates & Conversions**

**\* In- service support**





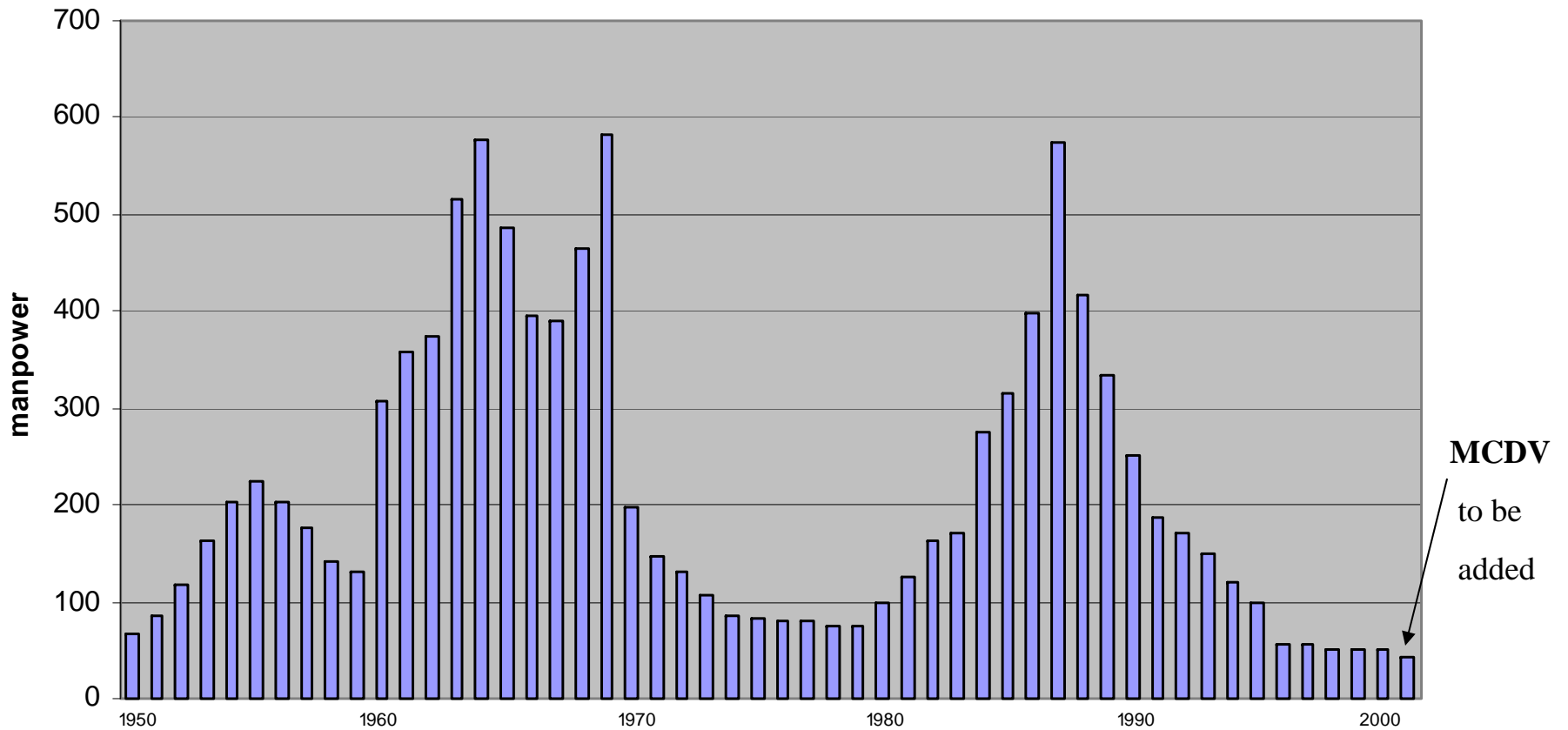
# Sources & Contributors



- DE's to DDH's (NCDO-MDDO)
    - Campbell/Patterson/McKenzie/Craig/McGeorge
  - DDH 280 Class (Iroquois) – (TRUMP)
    - Campbell /Patterson/McKenzie
  - FFH 330 Class (Halifax)
    - Campbell/Patterson/McKenzie
  - FHE 400 Class (Bras d'Or)
    - D.Monteith
  - MCDV 700 Class (Kingston)
    - Thatcher
- 
- Journals, articles, books, personal files
    - Gillespie/ Knox/ Jane's/ Allan/ Sellick/ Williams/  
MacPherson & Burgess/ Milman & Fisher/ R.Monteith & Becker



# Warship Design man-years





# Ship Class - Framework



- Description, timeframe, major events
- Contractual arrangements
  - Prime, subs, roles, etc.
- R&D
- IRB commitments
- Vendors
  - Who provided what, impact on their business
- In Service Support
- Assessment of industrial impact



## Next Steps



- Looking for people interested in contributing in any of these sectors
- Many hands make light work – this should be an enjoyable and rewarding pursuit
- Where our efforts fit in the grand scheme – a word from Directorate of History and Heritage





# Contributions Sought



- Provide recollections of specific shipbuilding projects in written or verbal form
- Look for “bottom drawer” papers or other materials as a contribution
- Identify others who might be able to contribute
- Act as focal point for a specific project, seeking contributors
- Help organize written and verbal contributions to form the historical record



# Discussion

